

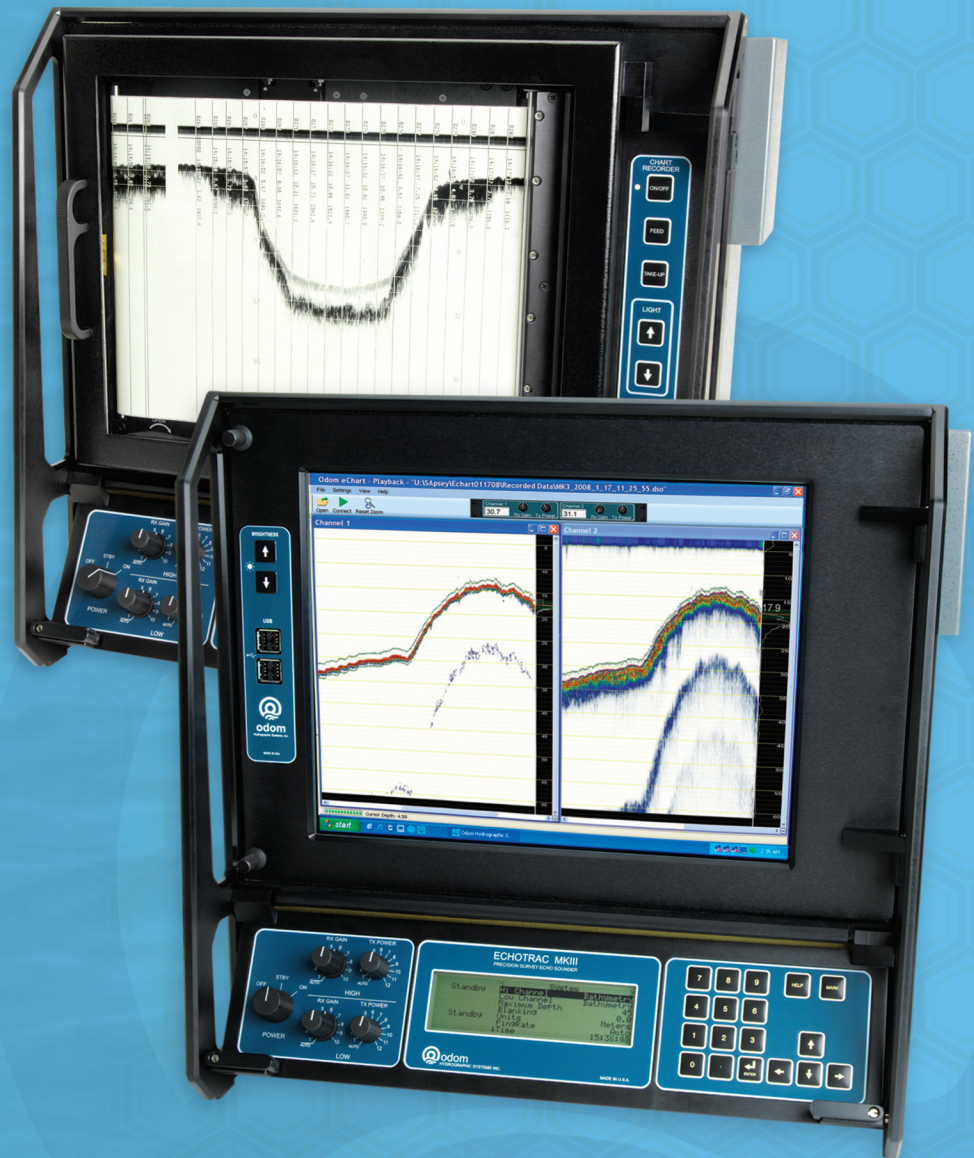
ODOM ECHOTRAC™

MKIII MODEL DF3200



odom
HYDROGRAPHIC SYSTEMS

- INTERCHANGEABLE PAPER CHART OR COLOR LCD
- FREQUENCY AGILE (BOTH CHANNELS)
- INTERNAL DATA STORAGE AND PLAYBACK WITH COLOR LCD
- FOUR SERIAL PORTS AND ETHERNET INTERFACE
- OPTIONAL BUILT-IN DGPS
- AC/DC POWER INPUT



ODOM
ECHOTRAC™
 MKIII MODEL DF3200

Like to keep your options open? Then **Odom's Echotrac™ MKIII** is the echo sounder for you! It's the only sounder on the market offering you the choice of either a high-resolution thermal paper recorder or a full-sized high bright color LCD chart in interchangeable module format. When it comes from Odom, you know it's durable, easy to use and backed by the best customer service in the industry. Both high and low channels feature frequency agility, enabling the operator to precisely match the transceiver to almost any existing transducer. This matching ability minimizes near-surface noise caused by transducer ringing while increasing echo return strength. The **MKIII** is capable of both shallow and deep-water operations and it features unsurpassed interfacing flexibility with four serial ports and high speed Ethernet capability for maximum efficiency. With all of these features in such a compact and portable package, it's easy to see why the **Echotrac™ MKIII** is such a respected echo sounder.

Buy Odom – invest in your peace of mind.

S P E C I F I C A T I O N S

Frequency

- High band: 100 kHz – 1 MHz
- Low band: 3.5 kHz – 50 kHz

Output Power

- High: 100 kHz – 1 kW RMS max 200 kHz – 900 W RMS max, 750 kHz – 300 W RMS max
- Low: 3.5 kHz – 2 kW RMS max, 50 kHz – 2 kW RMS max

Input Power

- 110 or 220 V AC / 24 V DC 50 watts

Resolution

- 0.01m / 0.10 ft.

Accuracy

- 0.01m / 0.10 ft. +/- 0.1% of depth @ 200 kHz
- 0.10m / 0.30 ft. +/- 0.1% of depth @ 33 kHz
- 0.18m / 0.60 ft. +/- 0.1% of depth @ 12 kHz (corrected for sound velocity)

Depth Range

- 0.2 – 200 m / 1.0 – 600 ft. @ 200 kHz
- 0.5 – 1500 m / 1.5 – 4500 ft. @ 33 kHz
- 1.0 – 6000 m / 3.0 – 20,000 ft. @ 12 kHz

Phasing

- Automatic scale change, 10%, 20%, 30% overlap or Manual

Printer

- High resolution 8 dot/mm (203 dpi), 16 gray shades
- 216mm (8.5 in) wide thermal paper or film
- External ON/OFF switch
- Paper advance control

Paper Speed

- 1cm/min. (0.5 in/min.) to 22 cm/mm (8.5 in/min.), Auto = one dot row advance for each Ping

Sound Velocity

- 1370 – 1700 m/s
- Resolution 1 m/s

Transducer Draft Setting

- 0 – 15 m (0 – 50 ft.)

Depth Display

- On control PC and LCD display

Clock

- Internal battery backed time, elapsed time and date clock

Annotation

- Internal – date, time, optional GPS position from built-in Rx.
- External – up to 80 ASCII characters from RS232 Serial or Ethernet port

Interfaces

- 4 X RS232 or 3 X RS232 and 1 X RS422
- Inputs from external computer, motion sensor, sound velocity
- Outputs to external computer, remote display
- Outputs with LCD chart – video out
- Ethernet interface
- Heave – TSS1 or sounder sentence

Blanking

- 0 to full scale

Installation

- Desktop, optional rack mount or bulkhead mount

Help

- The function of each parameter and it's minimum and maximum values can be printed on the paper chart. The record of settings in tabular format is available on demand, and a continuous printout of parameters is available on thermal paper models. Log files are automatically created by Echotrac Control when that software is used to control the sounder.

Environmental Operating Temperature

- 0' – 50' C, 5 – 90% relative humidity, non-condensing

Dimensions

- 450 mm (17.7 in) H x 450 mm (17.7 in) W x 300 mm (12.8 in) D

Weight

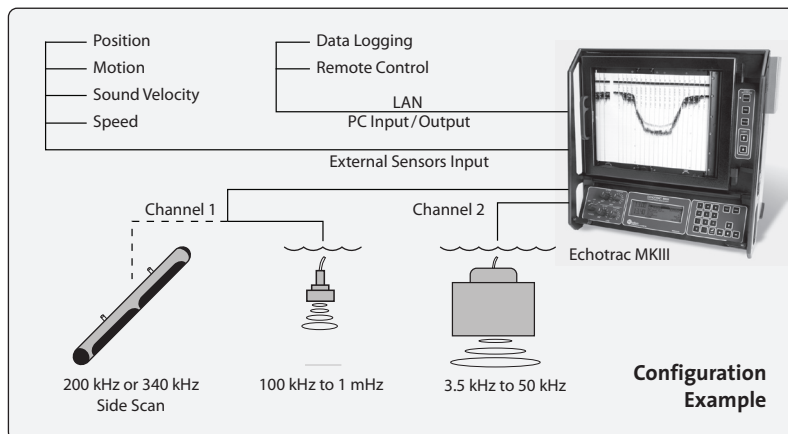
- 15.9 kg (35 lbs.)

Options

- Remote Display
- Side Scan Transducer 200 kHz or 340 kHz
- Built-in DGPS

Features:

- Selectable Receiver
- Bandwidth for shallow/deep water echo sounding
- Silas compatible output for sediment analysis



1450 Seaboard Avenue
 Baton Rouge, Louisiana 70810-6261 USA
 E-mail: email@odomhydrographic.com
 www.odomhydrographic.com