

HYDROPULSION SPECTRUM 45 P&T CAMERA



GENERAL DESCRIPTION

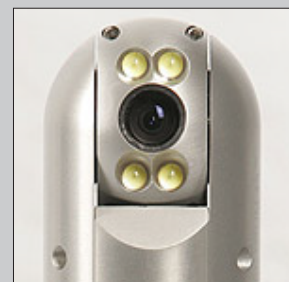
The Spectrum 45™ pan and tilt camera is one of the smallest industrial cameras of its kind. With a diameter of only 1.75"/45mm, this robust 420 TV line resolution, 1.0 lux, 1/4" CMOS colour camera is built out of aluminium and depth rated to 100ft/30m. In addition, the Spectrum 45™ camera offers 4 high powered LED lights to maximise your penetration, visibility and image quality.

APPLICATIONS

- Toxic environment inspection
- Underwater inspection
- Caisson inspection
- Nuclear fuel pool inspection
- Reactor vessel inspection
- Small diameter pipe inspection
- Foreign object search and retrieval
- Dam and lock inspection
- Robotics and remote tooling
- ROV integration
- Corrosion evaluation
- Remote monitoring

BENEFITS

- Miniature size for inspections
- Lightweight
- Robust and reliable
- Waterproof to 100ft/30m
- Sensitive controls for precise operation



**Making
technology
work for you!**

OCEANSCAN LIMITED

**DENMORE ROAD, BRIDGE OF DON, ABERDEEN,
SCOTLAND, U.K., AB23 8JW**

TEL; +44(0)1224 707000, FAX: +44(0)1224 707001

Email: rental@oceanscan.co.uk, Website: www.oceanscan.co.uk

Accredited to BS EN ISO 9001:2000

HYDROPULSION SPECTRUM 45 P&T CAMERA

TECHNICAL SPECIFICATIONS

SIZE

Diameter: 1.75"/45mm
Length: 4.1"/104mm + connector

CAMERA

Material: Aluminium
Type: Colour 1/4" CMOS
Sensitivity: 1.0 lux
Resolution: 420 TV Lines
Focus: Manual (remote)
Iris: Auto
Lights: 4 high intensity LEDs
Camera Weight: 0.7lb/0.32kg

CONTROLS

Active Controls: Pan, Tilt, Focus & Light
Pan: 360° continuous
Pan Speed: 0-26°/sec
Tilt: 280°
Tilt Speed: 0-12°/sec
Horizontal FOV: 53° in air
Clutch: Pan & Tilt Clutch
Lights: Variable Intensity

OPERATING ENVIRONMENT

Temperature: 0-50°C (32-122°F)
Depth Rating: 100ft/30m

CONTROL SYSTEM

Type: Spectrum Controller
Power: 110-220 VAC, 50-60Hz
Pelican Case: 1450 Pelican Case
Pelican Size: 16" x 13" x 6 7/8"
(40.6cm x 33cm x 17.4cm)
Pelican Weight: 20.2kg/9.2lb
Interface: Membrane panel with joystick input and home function; pan, tilt and inclinometer feedback, video text overlay with key board entry, date/time and camera feed back. Tether Cable up to 1500ft/457m



**Making
technology
work for you!**

OCEANSCAN LIMITED
DENMORE ROAD, BRIDGE OF DON, ABERDEEN,
SCOTLAND, U.K., AB23 8JW
TEL; +44(0)1224 707000, FAX: +44(0)1224 707001
Email: rental@oceanscan.co.uk, Website: www.oceanscan.co.uk
Accredited to BS EN ISO 9001:2000